



Knowledge and Library Services (KLS)

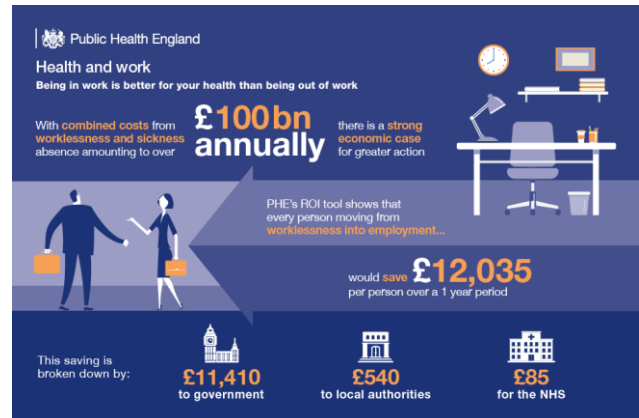
Impact stories

Title: A KLS literature search identifying key evidence contributed to an interactive return on investment (ROI) tool built by Optimity Advisors and PHE, showing the health and financial benefits of moving from unemployment to employment.

User testimonial: *“The search conducted by PHE KLS helped us identify the key studies on the health benefits of employment, which were used to develop the economic analysis”*
Rory Tierney, Senior Economist, Optimity Advisors

Challenge: There is a lack of accessible knowledge, in one place, on the benefits of moving into employment which includes health gains, and the savings to the health and social care system.

Solution: An interactive ROI tool was built, allowing local users to see the health and financial benefits from a cohort of people moving into employment. This can also be compared to the cost of achieving that change. The health benefits were drawn from evidence extracted from the KLS search.



Impact: The basecase analysis showed that for an individual moving into employment, the financial benefit to society is £23,000. Government benefits total £12,000, including £535 to the local authority and £85 to the NHS.

Success factors: Combining a review of the literature with other data, including that from Department for Work and Pensions (DWP), into a single economic tool helps local authorities understand the benefits of employment in more detail.

Lessons: Future research in this area should look in more depth at how health benefits vary according to the characteristics of the individual moving into employment, and their employment situation.

Contact: Rory Tierney, Senior Economist, Optimity Advisors:

rory.tierney@optimityadvisors.com

Shaun Donaghy, Senior Economic Advisor, Health Economics Team, PHE:

shaun.donaghy@phe.gov.uk